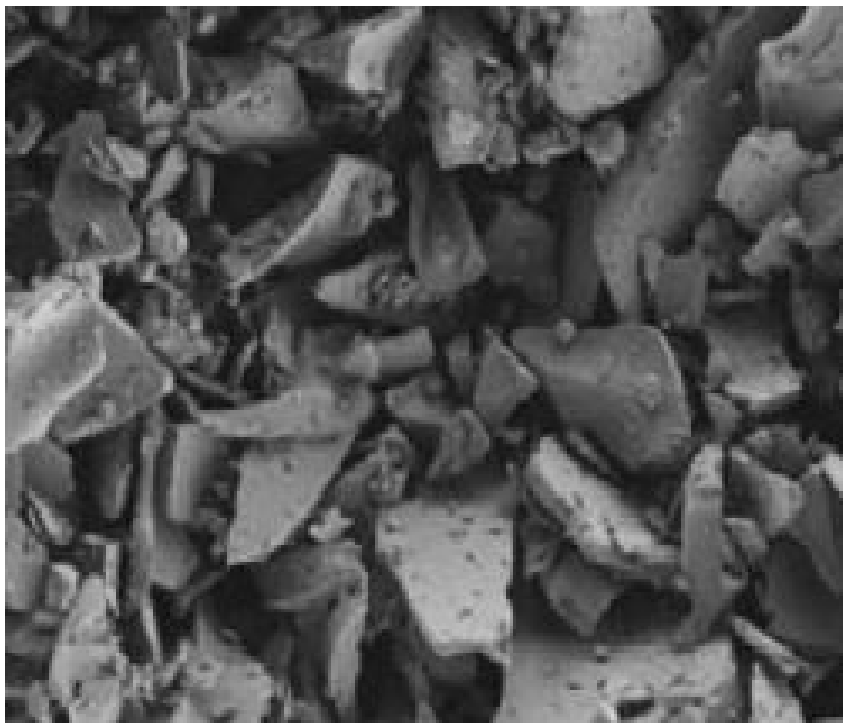


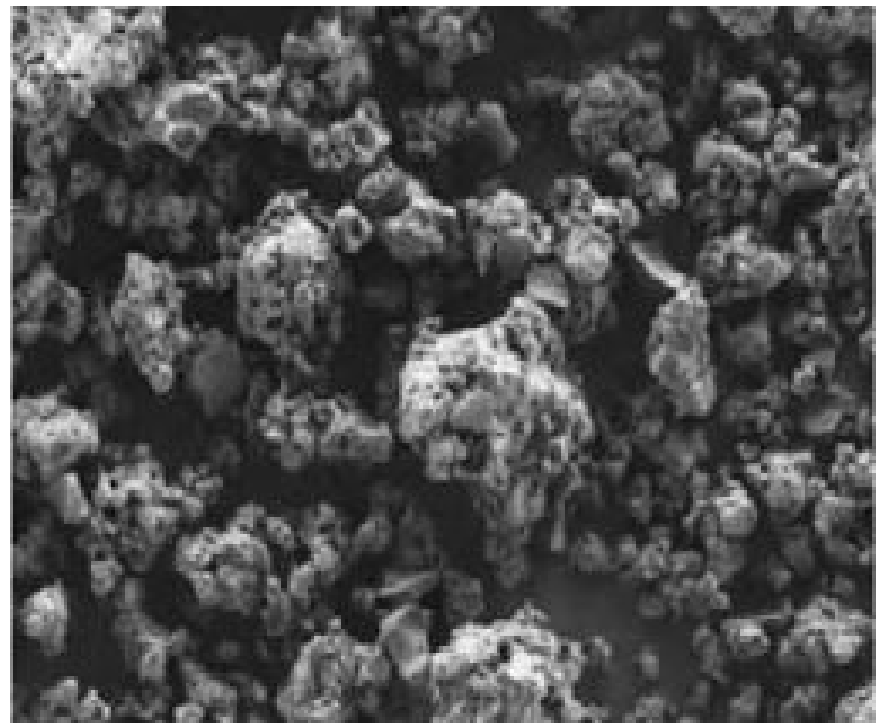
PARTICLE STRUCTURE

Cellular Fraction-Line Technology Revive Your Relationship with Nature's Complete Foods

The pictures below show clearly the difference in the particle structure produced by Cellular fraction-Line Technology which results in higher bioactivity as well as higher bioavailability



**Conventional Freeze Dried
Particles after mechanical
grinding**



**CFL Particle Structure
porous and soft
particles**

PARTICLE STRUCTURE

The pictures below show clearly the difference in the particle structure produced by Cellular fraction-Line Technology which results in higher bioactivity as well as higher bioavailability



Solid Particle Structure
difficult to absorb or
dissolve



Porous Particle Structure
easily absorbed/ highly
soluble